



HOTLINE® Blood and Fluid Warmers deliver warmer patients, case after case.



A full line of disposables are available for the HOTLINE® Warmer.

Also Hot: HEATTM® For Improved Patient Outcomes

- Evidence-based program designed to reduce incidence of unplanned hypothermia
- Helps you meet accreditation compliance requirements
- Offered at no cost to qualified hospitals

The Smiths Medical Solution

For routine flow fluid warming, choose the brand more hospitals trust: HOTLINE® Blood and Fluid Warmer, only from Smiths Medical ASD, a worldwide leader in Temperature Management Solutions™. Smiths Medical is a leading supplier of medical devices used during critical and intensive care, surgery, post-operative care recovery, and in a series of high-end home infusion therapies. We are focusing on developing technologies that offer both clinical and economic advantages to our healthcare providers and patients. Please let us know how we can help you.

Ordering Information

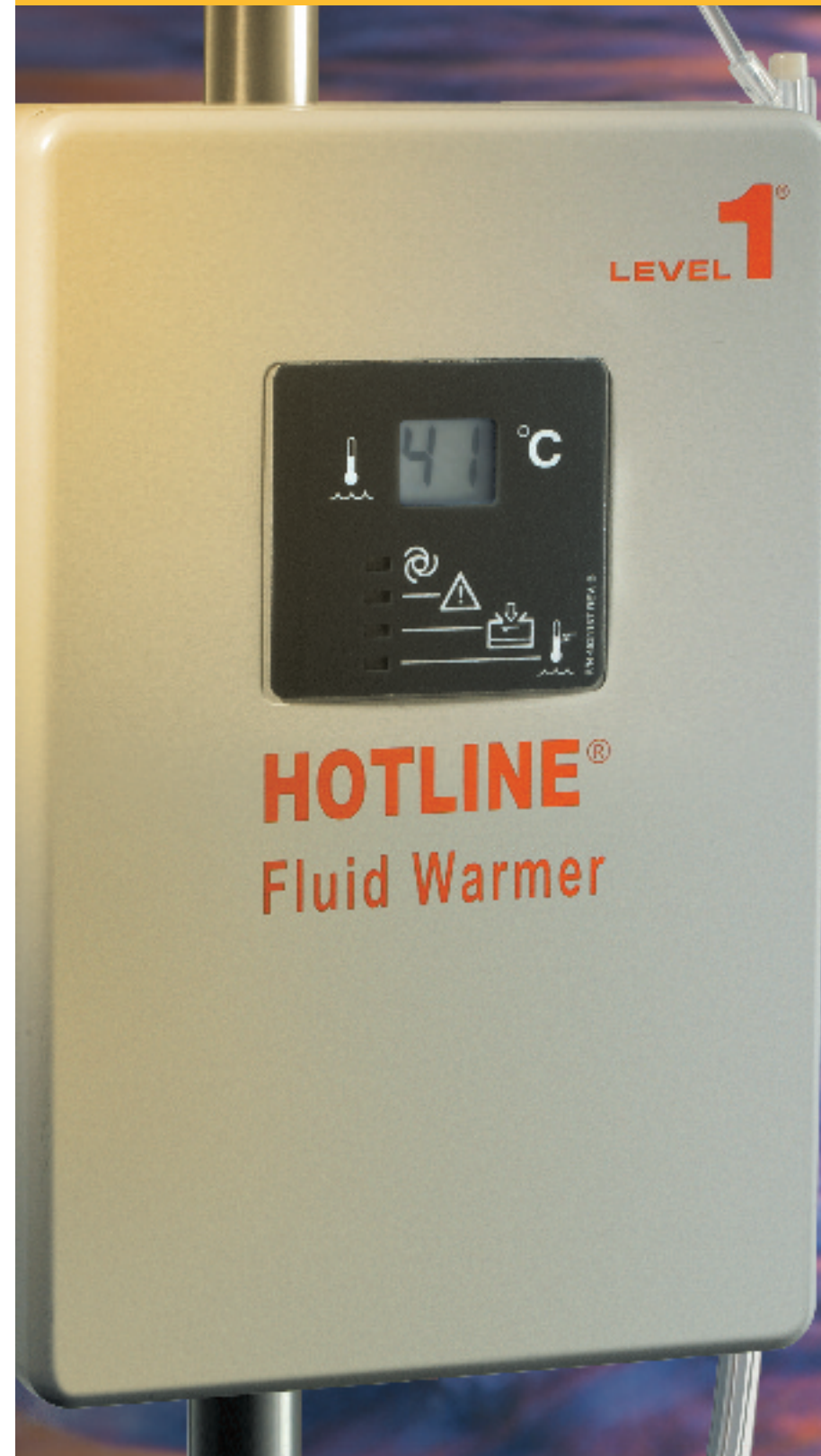
| Ref. Code | Description | Units/Case |
|-----------|---|------------|
| HL-90 | HOTLINE® Blood and Fluid Warmer | 1 |
| L-70 | Blood and IV Fluid Warming Set with Injection Port | 30 |
| L-70 NI | Blood and IV Fluid Warming Set without Injection Port | 30 |
| L-80 | Blood and IV Fluid Warming Set with L-10 Gas Vent | 30 |
| PC-8 | T Connector | 40 |
| YC-8 | Y Connector | 40 |
| L-10 | Gas Vent | 40 |

Please refer to the Instructions for Use supplied with the product for detailed instructions, warnings, and cautions. ©2010 Smiths Medical family of companies. All rights reserved. HOTLINE®, HEATTM®, and Temperature Management Solutions™ are trademarks of the Smiths Medical family of companies. The symbol ® indicates the trademark is registered in the U.S. Patent and Trademark Office and certain other countries. All other names and marks mentioned are trade names, trademarks, or service marks of their respective owners.

TM194800 2010. 7



smiths



Go with the
#1 Flow

Temperature Management Solutions® for improved patient outcomes

smiths

Smiths Medical ASD, Inc.
Norwell, MA 02061, USA
Phone: 1-214-618-0218
Toll-Free USA: 1-800-258-5361
www.smiths-medical.com

Superior Performance You'll Warm To

Seventy percent of U.S. hospitals use HOTLINE® Blood and Fluid Warmers.¹

HOTLINE® Warmer—#1 In Hypothermia Prevention

Even mild hypothermia can put your general anesthesia patients at risk for potentially costly and catastrophic complications, from delayed wound healing to cardiac arrest. That's why more hospitals use HOTLINE® Blood and Fluid Warmers than any other routine flow fluid warming system.

HOTLINE® Warmers outperform hotplate technologies to keep your patients warmer and your recovery room less crowded. Your hospital avoids unnecessary complications and enjoys the cost savings of shorter recovery room stays.

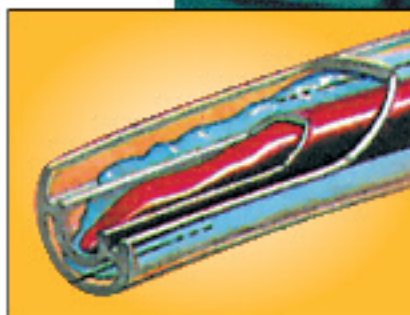
Proven In Over 16 Million Surgeries¹

HOTLINE® Warmers are the solution for everyone:

- Superior performance results in warmer patients
- Less maintenance time for nurses and technicians
- Lower costs for your hospital

Warmer Patients

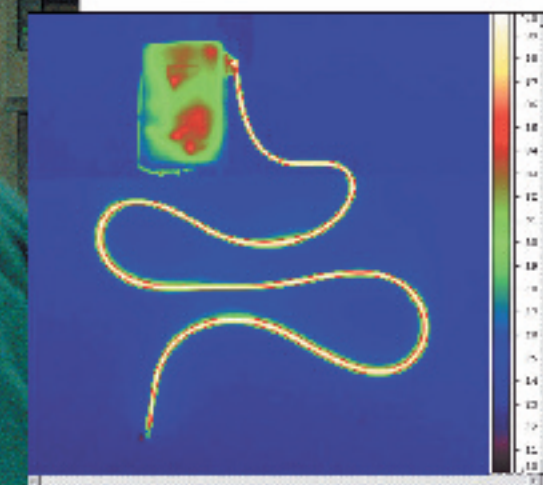
- Patented triple lumen tubing maintains layer of 42°C circulating solution around IV line
- Keeps blood and fluids warm between 37–42°C
- Eliminates patient line cool down
- Outperforms hotplate technologies in 91% of all surgical procedures²



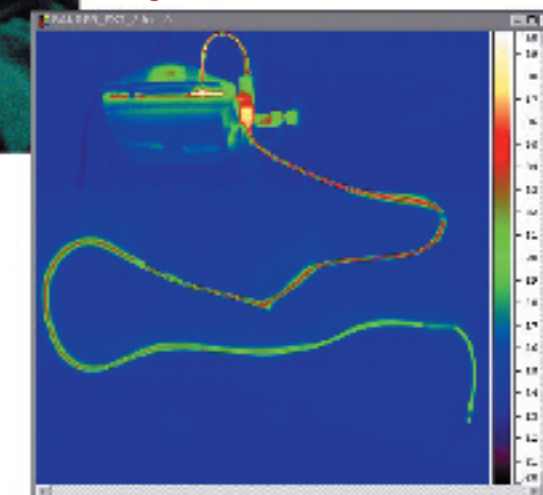
Only the HOTLINE® Blood and Fluid Warmer, with its patented triple lumen tubing, can deliver normothermic fluid to your patients at routine flow rates.



HOTLINE®



Ranger®



HOTLINE® Warmers outperform hotplate warmers. The HOTLINE® Blood and Fluid Warmer eliminated patient line cool down in bench testing, while the Ranger® hotplate warmer delivered temperature well below 37°C.³

Less Maintenance Time

- A new once-a-year reservoir maintenance protocol versus hotplate warmers, which require maintenance up to 12 times a year
- Easily maintains microbe-free environment

Lower Costs

- Annual cleaning means less maintenance cost versus up to once a month for hotplate warmers
- Requires less priming volume

Easy To Use

- Less time to set up
- Easy to disconnect from the patient

¹ Data on file.

² The HOTLINE® Blood and Fluid Warmer outperforms hotplate technologies in procedures that require flow rates of 50–2,000 mL/hour.

³ Thermal photography. No retouching or digital manipulation. Extension added to hotplate warmer to provide equivalent patient line length. Data on file.

**Choose the warming technology preferred by most hospitals.
Choose the HOTLINE® Blood and Fluid Warmer, and go with the #1 flow.**